

**VALPAR**  
QUALITY WORLDWIDE

For further information or to place an order, please contact our Sales Team or Customer Care Team

- Interested in other products in our range?  
**Python - Tubing - Tap & Trace Cooling - Beer & Soft Drinks Manifolds - Accessories**
- Interested in  
**Colder Drinks? - Cleaning & Hygiene? - Energy-Saving?**
- Can we help you solve a problem?

Please visit our website or contact a member of our Sales Team for information.

Valpar Industrial Limited  
13 Balloo Drive  
BANGOR  
Co Down  
BT19 7QY  
Northern Ireland

Tel: +44 (0) 28 9145 4544  
Fax: +44 (0) 28 9145 7512

E-mail: [info@valpar.co.uk](mailto:info@valpar.co.uk)  
Web: [www.valpar.co.uk](http://www.valpar.co.uk)



©VALPAR

**VALPAR**  
**Python**  
PERFORMANCE BY DESIGN

Valpar Industrial Limited was the first company in the world to produce machine-made python, an insulated bundle of tubing for draught drinks dispense. Today python plays a vital role in delivering high quality drinks at consistent low temperature. But optimum performance requires python design to complement your total dispense system. This is where Valpar can help you.

**The Role of Python**

Today the distance between cooler and point of dispense can range from 5 metres - 100 metres and sometimes even more. The role of a python is to minimise the heat gain of a beverage after it leaves the cooler up to the point of dispense. Cold rooms and coolers are all designed to take heat out of a beverage and the associated investment is relatively high. How can you ensure that this investment is not lost?

**Return on Investment**

A well-designed and manufactured python will minimise the heat gain between cooler and tap thus, allowing the cooler to operate at its most efficient setting.

This will reduce the workload and energy drain on your cooler, leading to lower maintenance costs and extending its lifespan.

The day to day running cost of the entire cooling system will be reduced.

Last, but not least, your cooling system will be able to dispense a greater number of colder drinks.

**The Impact of Insulation Thickness in a Python**

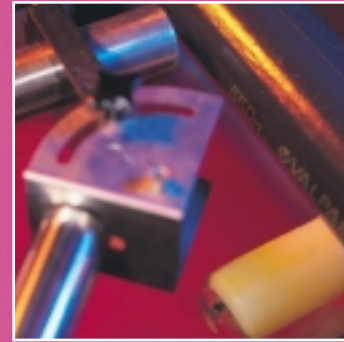
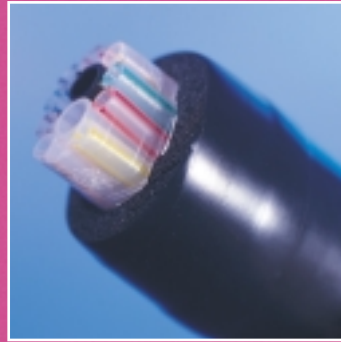
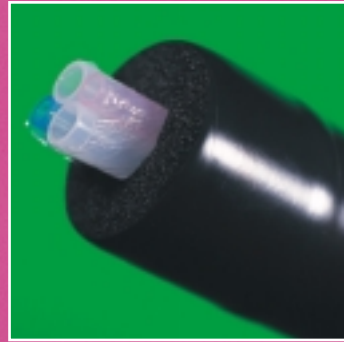
The industry standard choices of insulation thickness for pythons are 13mm and 19mm. For special applications, such as very high ambient temperatures and humidity conditions, 25mm and 32mm insulation can be supplied.

The two main issues to be considered when selecting insulation thickness are heat gain and condensation control.

The amount of heat gain entering a python can be controlled by the insulation thickness. Heat gain can be measured in Watts per metre. For example, the heat gain for 13mm insulation is 25% more than that of 19mm insulation.

Sufficient insulation must also be applied to prevent condensation on the python's surface. For example, in an ambient temperature of 25°C a typical python with 13mm insulation, and line temperature of 2°C, will give condensation protection up to 70% relative humidity whereas for 80% humidity 19mm insulation is required.

Valpar can assist you in the selection of insulation thickness for any particular application.



**Types of Python  
Manufactured by Valpar**

- Standard Insulated Taped Python
- High-Performance Insulated Jacket Python
- Non-Insulated Bundles
- Cabled Pythons and Bundles

**Standard Insulated Taped Python**

Valpar standard insulated taped python is used by breweries and soft drinks companies throughout the world.

**Tubing Choice**

The python is composed of a cluster of product lines, which are carefully positioned around water or glycol recirculation lines to give optimum cooling efficiency. The water/glycol recirculation lines are designed to take heat out of the product lines. We can help you to choose the most appropriate tube for your particular draught applications - beer, soft drinks, spirits etc. The lines are held tightly in configuration by the application of food approved bundle wrap.

**Insulation**

The outside of the wrapped tubing cluster is then covered by flexible closed-cell foam insulation. The low thermal conductivity of the insulation reduces heat absorption from the surrounding ambient temperature. We can help you to select the most suitable size of insulation to deliver optimum performance.

A PVC tape wrapping protects the insulation. Valpar insulated taped python is available in a wide range of specifications and can be manufactured to meet your individual requirements.

The combination of insulation and the cooling recirculation lines help to ensure that the beverage is dispensed at the correct temperature.

**High-performance Insulated Jacket Python**

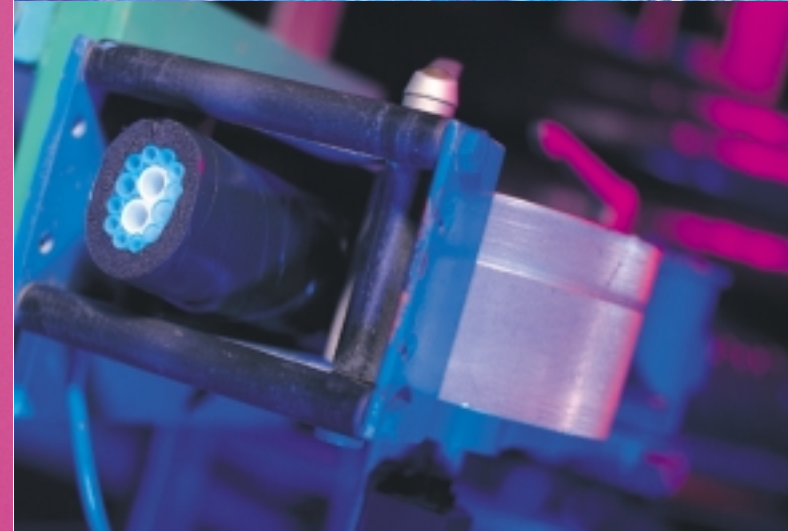
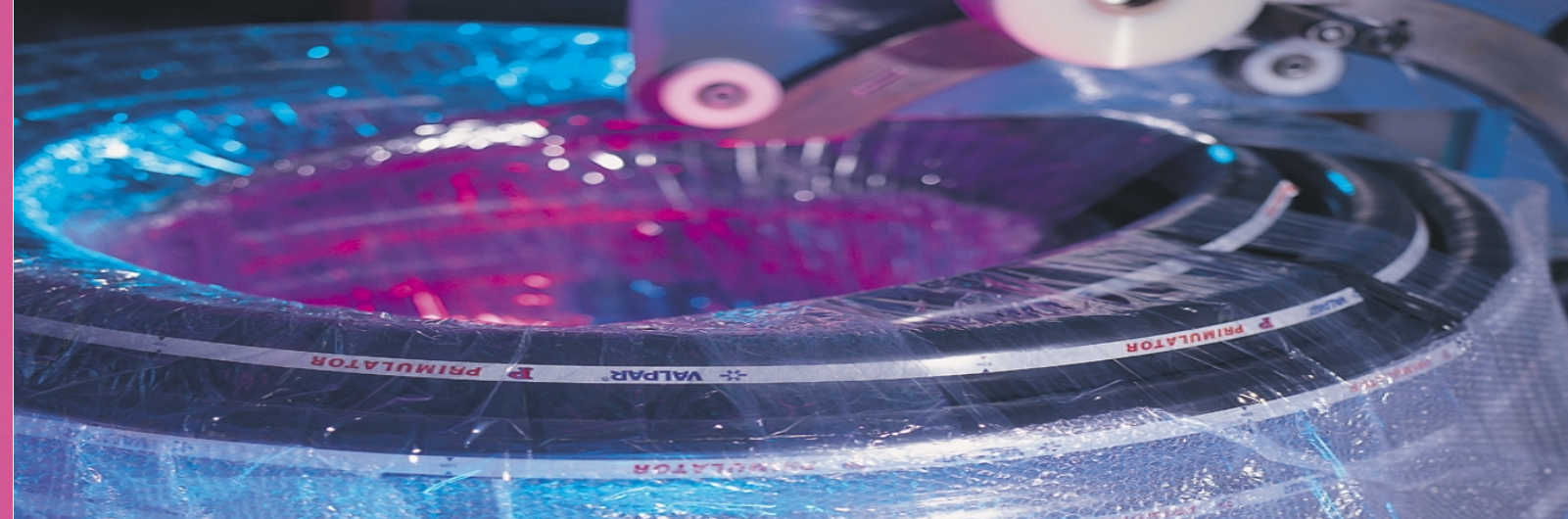
Launched in 1999 in response to your needs to dispense colder drinks and optimise cooler performance, there are now over 2 million metres of high-performance insulated jacket python installed worldwide.

**Proven Benefits**

The jacket python is similar in construction to the standard taped python. However, the outer jacket offers you a number of proven benefits:

- The jacket ensures no compression of insulation, giving 15% (minimum) extra insulation performance, compared to the equivalent Valpar taped product. This in turn offers 15% reduction in load on the cooler. Your coolers will function more efficiently and use less energy.
- The python is not constrained by tape wrapping and offers greater flexibility for bending.
- The tough outer skin is highly tear-resistant which means that the insulation is better protected both during and after installation.
- "Snags" caused by tape overlaps are eliminated and python is easier to pull, thus reducing installation times.
- When making connections off the python, jacket can be removed without shredding the insulation.

These are minimum benefits - some of you have told us that you have obtained even better results in the field and in independent testing.



**New in 2001**

A new super-smooth jacket has been developed to make installation even easier, particularly where two pythons are being installed side by side.

As with standard taped python, we can help you to pick the most suitable tubing and insulation specifications for your draught applications.

Jacket python production is subject to minimum production run quantities. For further information contact a member of the Sales Team.

**Non-insulated Bundles**

Valpar non-insulated bundles are produced to meet soft drinks industry needs. Soft drinks tubes are held tightly in configuration by a food approved bundle wrap. This bundle is then covered with a tough jacket. Non-insulated bundles are

- ideal for use in Cold Plate soft drinks systems
- made to your specification using product lines from Valpar's wide range of soft drinks tubing.

The jacket on the bundle can be coloured to meet your requirements.

Non-insulated bundle production is subject to minimum production run quantities. For further information contact a member of the Sales Team.

**Cabled Pythons and Bundles**

In response to your requests for more flexible python and bundles, Valpar now offers the option of cabled python and non-insulated bundles. The lines are twisted to give the product a greater degree of flexibility. This means it is easier to install in ducting and tight radius bends.

Twisted lines with insulation (cabled python) can be taped or jacketed. Twisted lines without insulation (cabled bundle) can also be taped or jacketed.

**Accessories**

Valpar can supply you with a range of accessories to aid python installation. These include tube and python cutters, python pullers, python clamps, trunking, finger insulation, fittings etc.